

GENIUS SINLE-PHASE E THREE-PHASE BYPASS

GENERAL INFORMATION

This bypass model, that can be either single-phase or three-phase, has been projected to control directly an auxiliary telebreaker. The intervention occurs when the tension on the lamps drops below 50% of the network tension. Such intervention is signalled by red led and by an “open collector” output alarm. The putting back in operation is automatically carried out upon restart of the regulation system. Furthermore it is possible to activate or deactivate the bypass status with the button located in the front of the device or through an input for the remote control. The single-phase version is manufactured in 2 units modular container, while the three-phase one is in 3 units modular container. They are both predisposed for omega bar rapid fixing.

CODE	MODEL
100892	GENIUS CONTROL BYPASS 1F
100893	GENIUS CONTROL BYPASS 3F

FUNCTIONAL CHARACTERISTICS

- It surveys the difference between network tension and output tension of the GENIUS POWER
- Direct control of the exchange contactors for the bypass state
- Activation, deactivation and remote signalling of the bypass state
- Manual activation and deactivation of the bypass state
- Visual signalling of the bypass state
- Manufactured in modular box for omega bar fixing

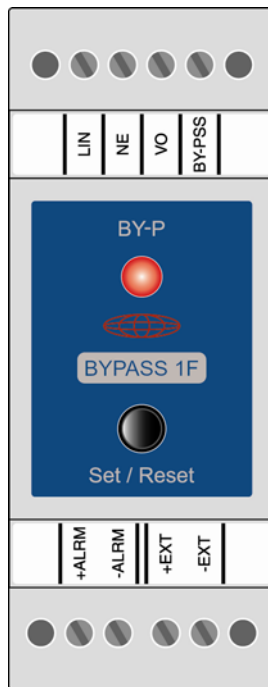
EQUIPMENT

- Red led signalling the bypass state
- Set/Reset buttons for each phase
- Serial communication gate RS232 with implemented BUS protocol
- Photo triac outputs for exchange contactors regulation
- Open collector outputs for the bypass state signalling

TECHNICAL CHARACTERISTICS

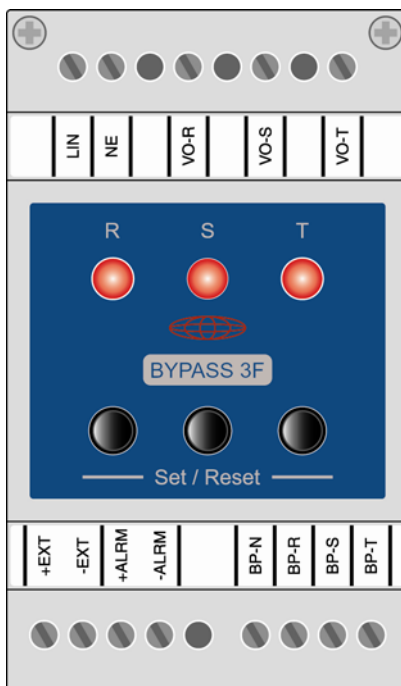
PARAMETER	BYPASS 1F	BYPASS 3F
ΔV max (VIN-VOUT)	120V \pm 20%	
Reaction time	10÷15 seconds	
Isolation class	Class I	
Operating temperature	From -10°C to $+45^{\circ}\text{C}$	
Storage temperature	From -25°C to $+75^{\circ}\text{C}$	
Humidity	Up to 90% without condensate	
Protection degree	IP20	
Weight	20g	40g
Terminal section	Solid conductors 2.5mm ²	
Dimension [mm]	90 x 35 x 60	90 x 52,5 x 60

DISPOSIZIONE CONTATTI BYPASS 1F



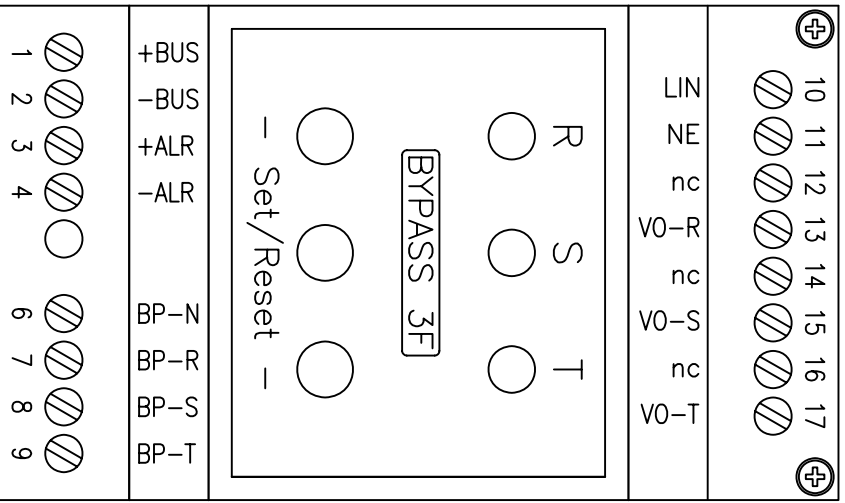
CONTATTO	DESCRIZIONE
+ALRM	OUTPUT OPEN-COLLECTOR ALLARM SIGNALLING
-ALRM	
+EXT	INPUT REMOTE CONTROL BYPASS STATE
-EXT	
LIN	POWER INPUT 230VAC
NE	NEUTRAL
VO	INPUT READING OF OUTPUT TENSION
BY-PSS	COMMAND ACTIVATION BYPASS

DISPOSIZIONE CONTATTI BYPASS 3F



CONTATTO	DESCRIZIONE
+EXT	INPUT REMOTE CONTROL BYPASS STATE
-EXT	
+ALRM	OUTPUT OPEN-COLLECTOR ALLARM SIGNALLING
-ALRM	
BP-N	NEUTRAL REFERENCE FOR BYPASS ACTIVATIONS
BP-R	COMMAND ACTIVATION BYPASS PHASE R
BP-S	COMMAND ACTIVATION BYPASS PHASE S
BP-T	COMMAND ACTIVATION BYPASS PHASE T
LINE	POWER INPUT 230VAC
NE	NEUTRAL
VO-R	INPUT READING OF OUTPUT TENSION PHASE R
VO-S	INPUT READING OF OUTPUT TENSION PHASE S
VO-T	INPUT READING OF OUTPUT TENSION PHASE T

52.5



61

4.9

90

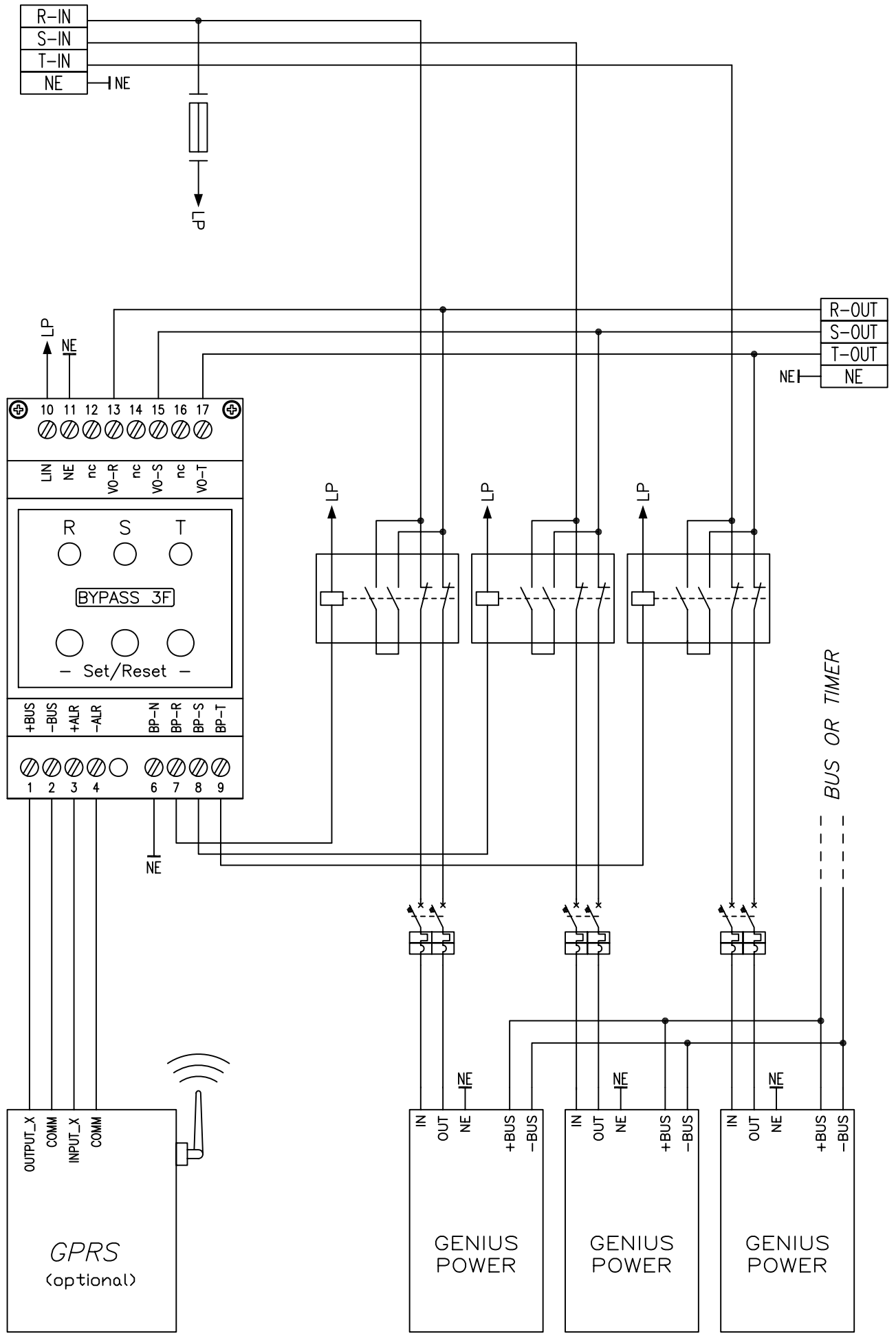
5

45

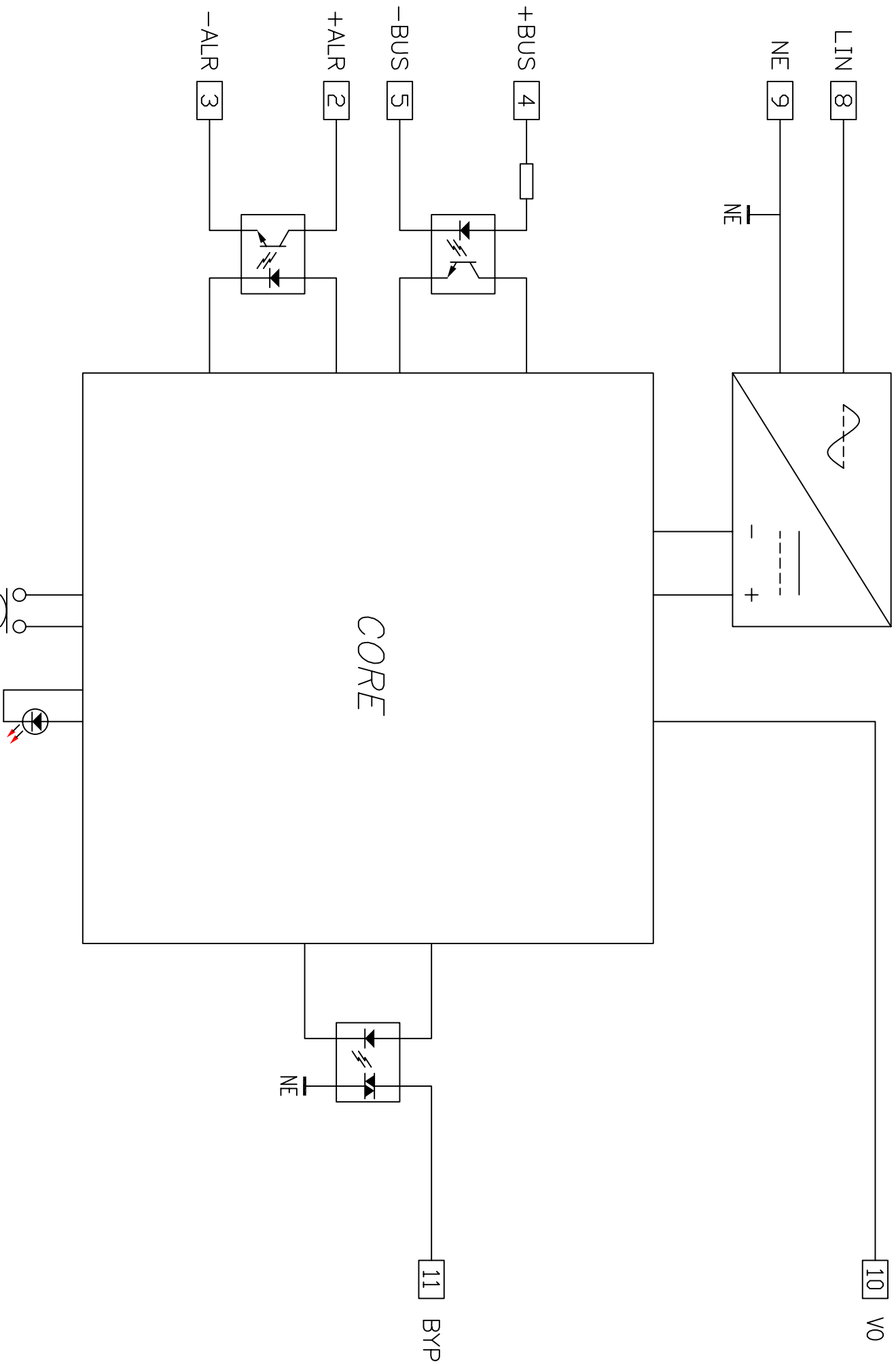
63

32

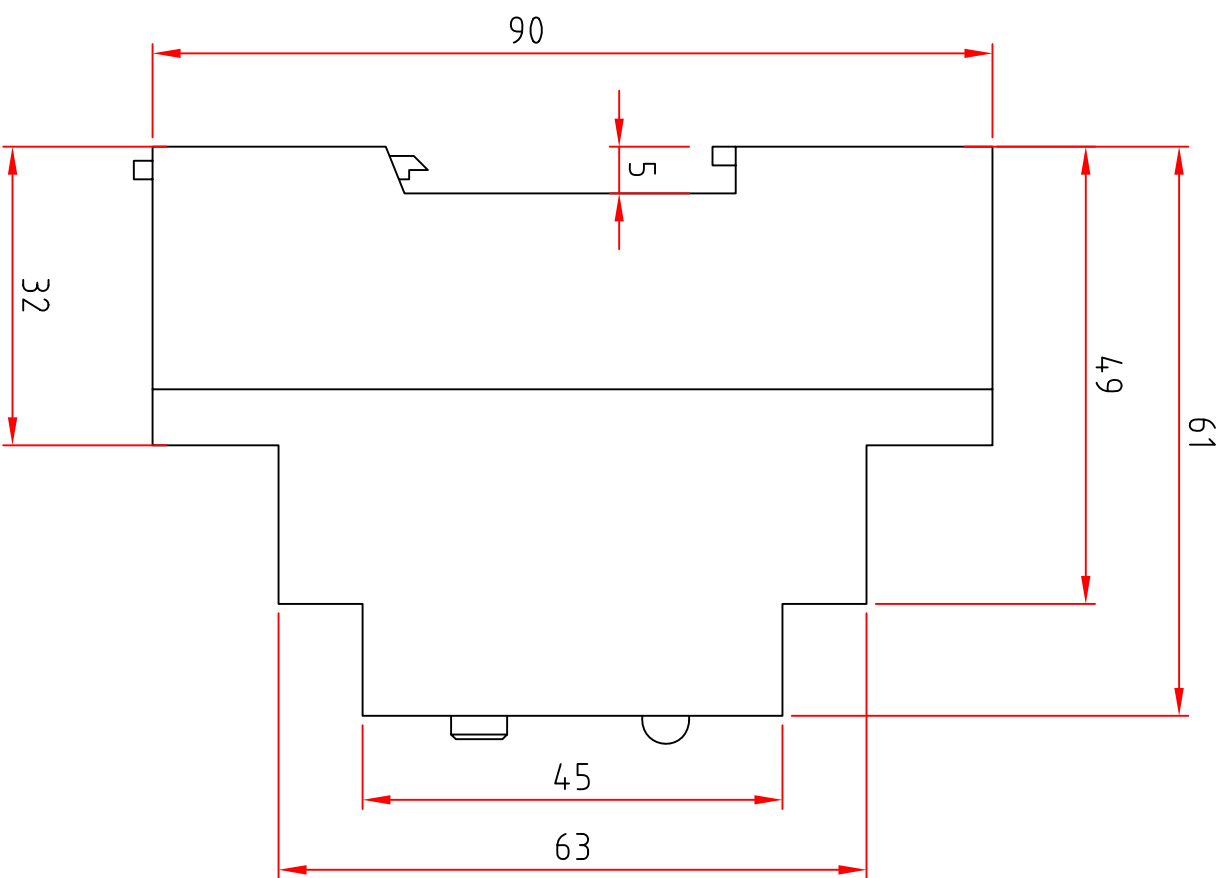
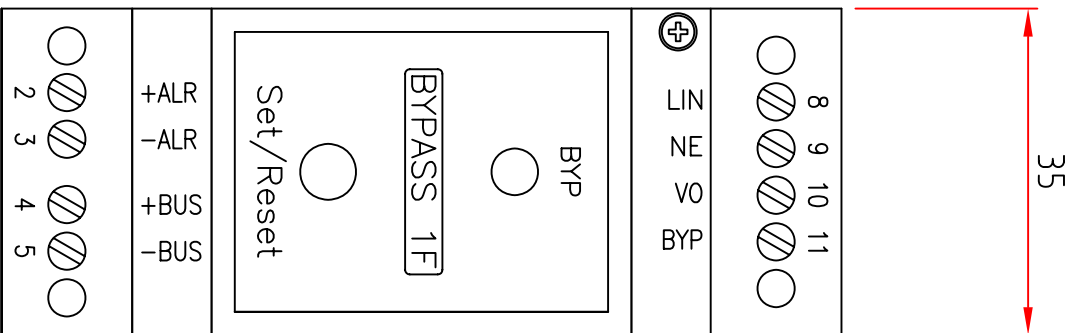
BYPASS 3F Dimension Drawing



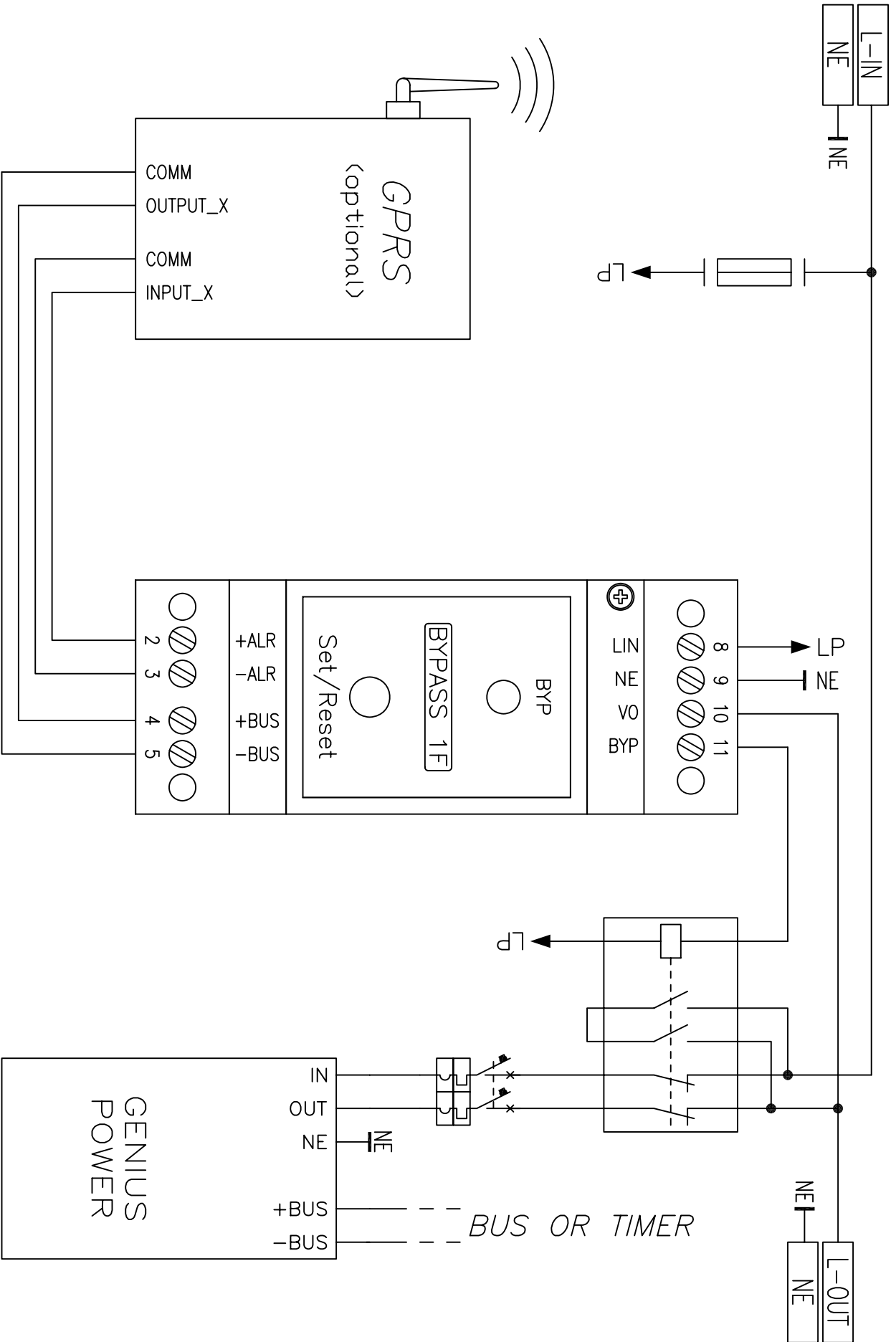
BYPASS 3F Typical Application



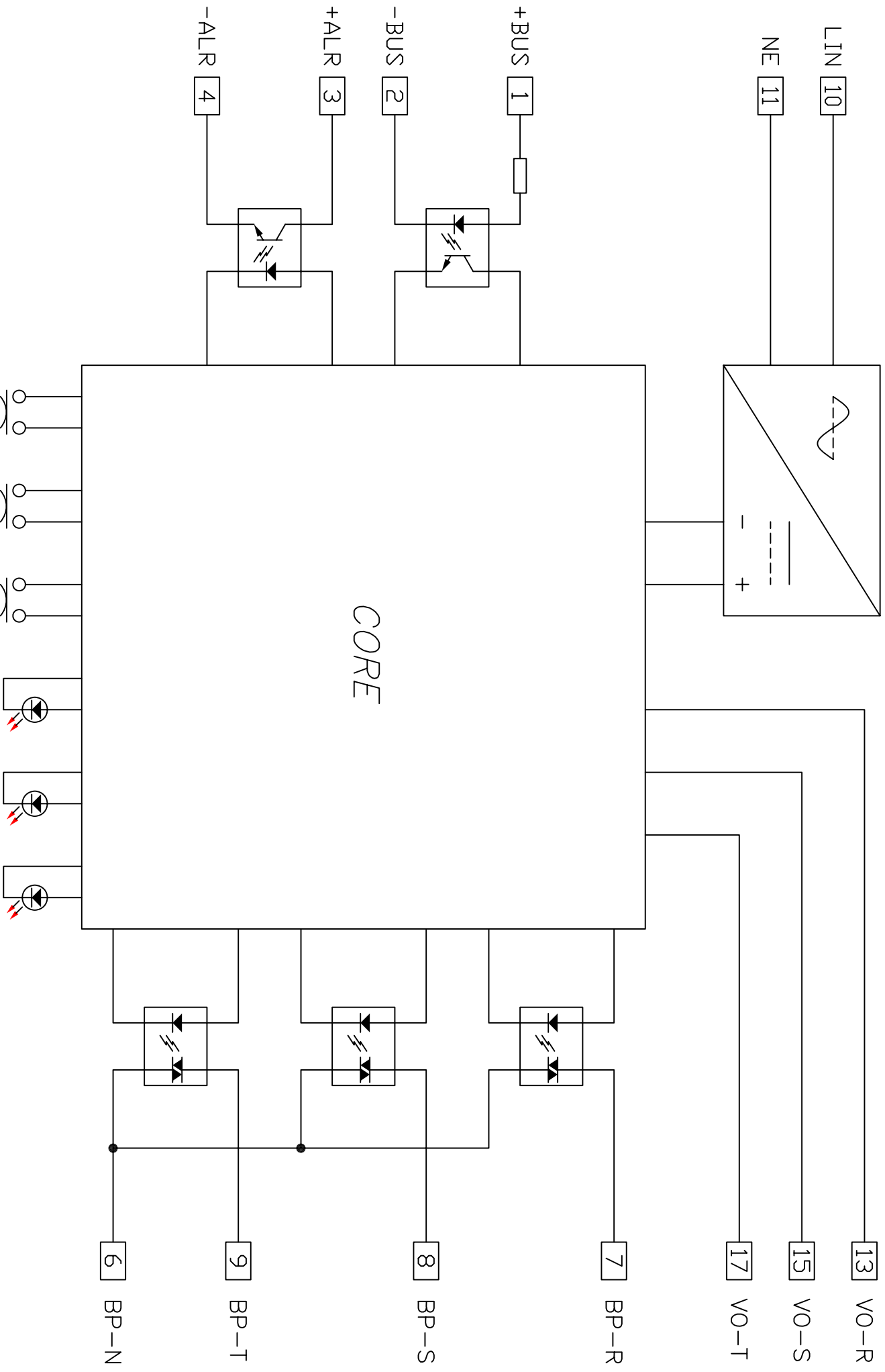
BYPASS 1F Schematic block diagram



BYPASS 1F Dimension Drawing



BYPASS 1F Typical Application



BYPASS 3F Schematic block diagram